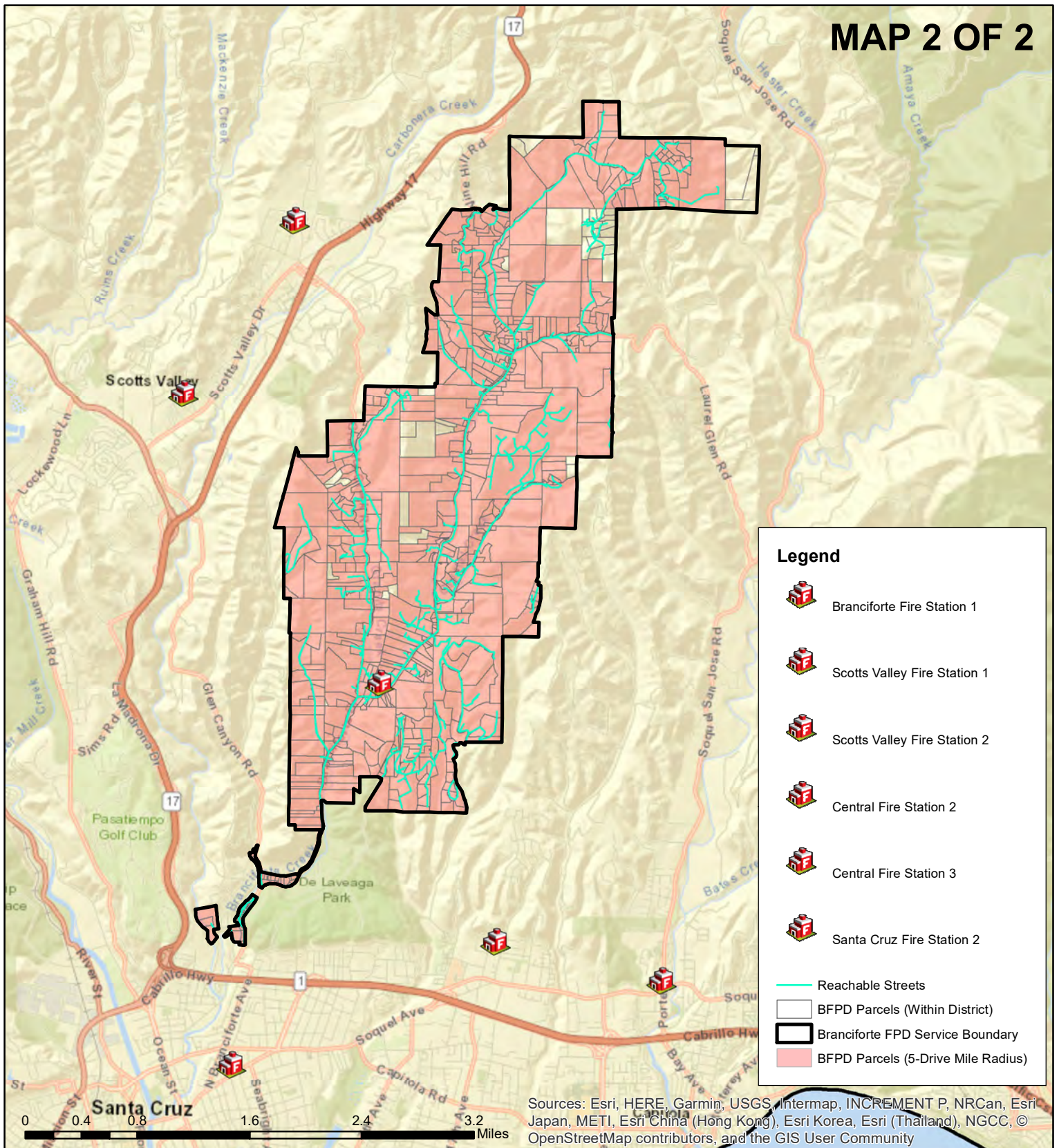


Branciforte Fire Protection District (Surrounding Fire Stations)

Based on LAFCO's analysis, 655 out of 745 parcels (88%) can be reached by surrounding fire stations (with at least 3 firefighters) within a 5-mile driving distance excluding the B40 Fire Station in operation. This means that 90 parcels (12%) will be beyond a 5-mile driving distance from a fire station if the B40 station does not obtain proper funding or staffing.



Branciforte Fire Protection District (Surrounding Fire Stations)

Based on LAFCO's analysis, 737 out of 745 parcels (99%) can be reached by surrounding fire stations within a 5-mile driving distance including the B40 Fire Station in full operation (at least 2 firefighters on duty). This means that 8 parcels (1%) are currently beyond a 5-mile driving distance from a nearby fire station.

Under this scenario, the B40 Fire Station requires a new benefit assessment to be in full operation.